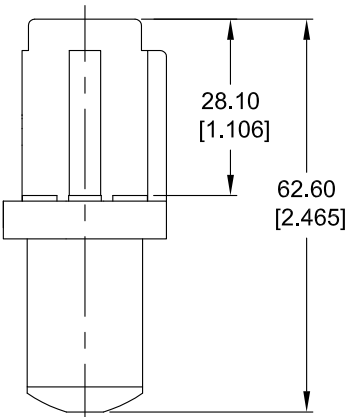
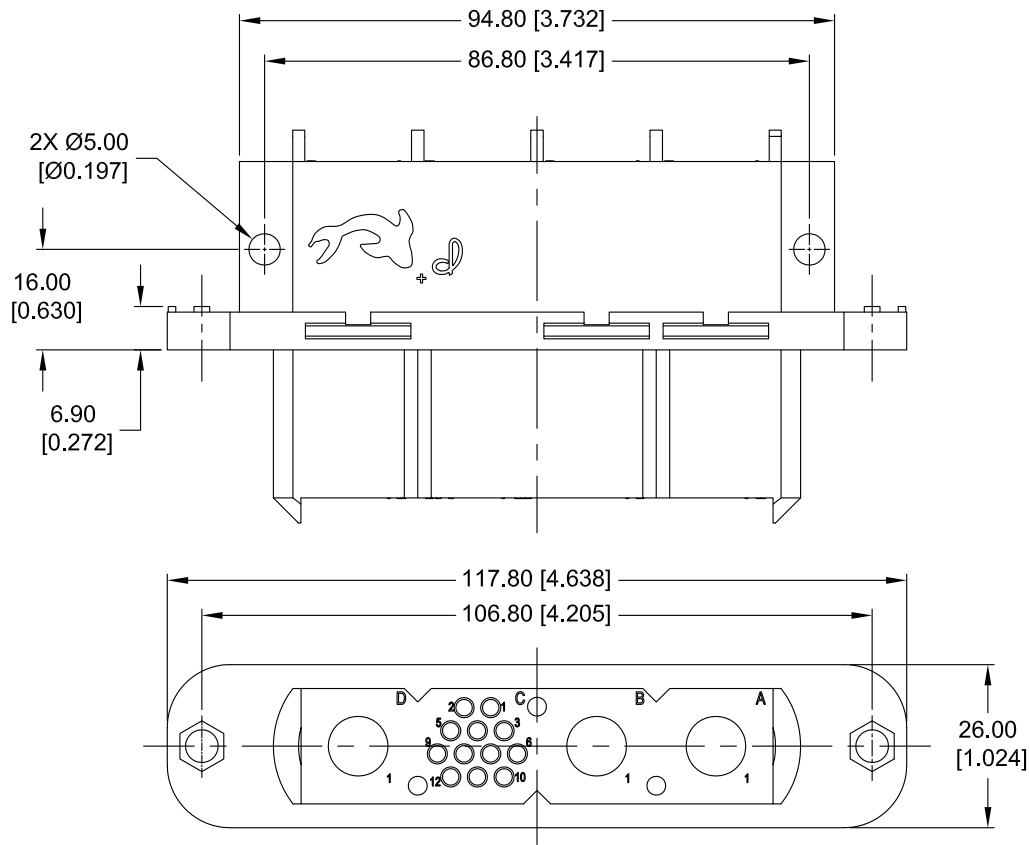


POSITRONIC ASIA PTE. LTD. BELIEVES THE DATA ON THE DRAWING TO BE RELIABLE. SINCE THE TECHNICAL INFORMATION IS GIVEN FREE OF CHARGE, THE USER EMPLOYS SUCH INFORMATION AT HIS OWN DISCRETION AND RISK. POSITRONIC ASIA PTE. LTD. ASSUMES NO RESPONSIBILITY FOR RESULTS OBTAINED OR DAMAGES INCURRED FROM USE OF SUCH INFORMATION IN WHOLE OR IN PART.

DATE	REV	REVISION RECORD	DRN	CKD	APP
17 FEB 09	NC	PA ECO 09028	KD	HM	NK



DRAWING NO.	PART NUMBER	REMARKS
ASK21910-1	GG8868F10	-
ASK21910-2	GG8868F10/AA	RoHS COMPLIANT PER RoHS DIRECTIVE 2002/95/EC OF 27 JAN 2003.



**POSITRONIC ASIA PTE. LTD.**  
3014A UBI ROAD 1, #07-01. SINGAPORE 408703.  
Tel: (65) 6842-1419 / Fax: (65) 6842-1421 / Email: singapore@connectpositronic.com

 <b>GENERAL TOL.</b> LINEAR : $\pm 0.38$ [0.015] ANGULAR : $\pm 5^\circ$	<b>SERIES</b> GG	<b>SCALE</b> NTS	<b>DRAWN</b> KD	<b>CHECKED</b> HM	<b>APPROVED</b> NK
	<b>TITLE</b> GG8868F10 GG8868F10/AA				
UNLESS OTHERWISE SPECIFIED, ALL DIMENSIONS ARE IN MILLIMETERS [INCHES]	<b>DATE</b> 17 FEB 09	<b>DRAWING NUMBER</b> ASK21910-* SHEET 01 OF 01			<b>REV.</b> NC

NOTES:  
1) MATERIALS AND FINISHES:  
INSULATOR: GLASS FILLED NYLON 6-6, UL 94V-0. COLOR: GOLD.  
CONTACTS:PRECISION MACHINED COPPER ALLOY WITH GOLD FLASH OVER NICKEL.  
CONTACTS ORDERED SEPARATELY.