

MOTOROLA

SEMICONDUCTOR

TECHNICAL DATA

T-33-11

Designer's Data Sheet

NPN Silicon Power Transistor

Switchmode™ Series

For Isolated Package Applications

This transistor is designed for high-voltage, high-speed, power switching in inductive circuits where fall time is critical. It is particularly suited for line-operated switchmode applications, where the mounting surface of the device is required to be electrically isolated from the heatsink or chassis.

Typical Applications: Switching Regulators, Inverters, Solenoids, Relay Drivers, Motor Controls, Deflection Circuits

Features:

- Collector-Emitter Voltage — $V_{CEV} = 800$ Vdc
- Fast Turn-Off Times
 - 100 ns Inductive Fall Time — 100°C (Typ)
 - 120 ns Inductive Crossover Time — 100°C (Typ)
 - 500 ns Inductive Storage Time — 100°C (Typ)
- 100°C Performance Specified for:
 - Reverse-Biased SOA with Inductive Load
 - Switching Times with Inductive Loads
 - Saturation Voltages
 - Leakage Currents
- Extremely High RBSOA Capability
- Case 221D is UL Recognized at 3500 V_{RMS} : File #E69369

MAXIMUM RATINGS

| Rating | Symbol | Value | Unit |
|--|---------------------------------------|------------|-------|
| Collector-Emitter Voltage | $V_{CEO(sus)}$ | 450 | Vdc |
| Collector-Emitter Voltage | V_{CEV} | 850 | Vdc |
| Emitter-Base Voltage | V_{EB} | 6.0 | Vdc |
| RMS Isolation Voltage (for 1 sec, $T_A = 25^\circ\text{C}$, Relative Humidity $\leq 30\%$)(2) | Test No. 1 Per Fig. 18 V_{ISOL1} | 4500 | V |
| | Test No. 2 Per Fig. 19 V_{ISOL2} | 3500 | |
| | Test No. 3 Per Fig. 20 V_{ISOL3} | 1500 | |
| Collector Current — Continuous — Peak(1) | I_C | 5.0 | Adc |
| | I_{CM} | 10 | |
| Base Current — Continuous — Peak(1) | I_B | 4.0 | Adc |
| | I_{BM} | 8.0 | |
| Total Power Dissipation @ $T_C = 25^\circ\text{C}$ @ $T_C = 100^\circ\text{C}$ Derate above $T_C = 25^\circ\text{C}$ | P_D | 40 | Watts |
| | | 16 | |
| | | 0.32 | W/°C |
| Operating and Storage Junction Temperature Range | T_J, T_{stg} | -55 to 150 | °C |

THERMAL CHARACTERISTICS

| Characteristic | Symbol | Max | Unit |
|--|-----------------|-------|------|
| Thermal Resistance, Junction to Case* | $R_{\theta JC}$ | 3.125 | °C/W |
| Lead Temperature for Soldering Purposes: 1/8" from Case for 5 Seconds | T_L | 260 | °C |

(1) Pulse Test: Pulse Width = 5.0 ms, Duty Cycle $\leq 10\%$.

(2) Proper strike and creepage distance must be provided.

* Measurement made with thermocouple contacting the bottom insulated mounting surface of the package (in a location beneath the die), the device mounted on a heatsink, thermal grease applied at a mounting torque of 6 to 8 in-lbs.

Designer's Data for "Worst Case" Conditions — The Designer's Data Sheet permits the design of most circuits entirely from the information presented. Limit curves — representing boundaries on device characteristics — are given to facilitate "worst case" design.

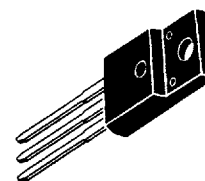
Designer's and SWITCHMODE are trademarks of Motorola Inc.

Preferred devices are Motorola recommended choices for future use and best overall value.

MJF16002

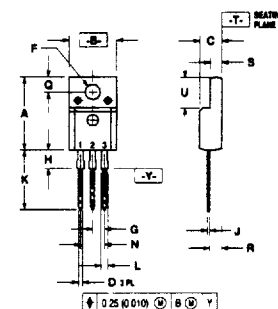
Motorola preferred device

POWER TRANSISTOR
5.0 AMPERES
450 VOLTS
40 WATTS



CASE 221D-02
UL RECOGNIZED

OUTLINE DIMENSIONS



STYLE 2
PIN 1 BASE
2 COLLECTOR
3 EMITTER

NOTES
1 DIMENSIONING AND TOLERANCING PER ANSI
Y14.5M 1982
2 CONTROLLING DIMENSION: INCH

| | MILLIMETERS | | INCHES | |
|-----|-------------|-----------|--------|-------|
| DIM | MIN | MAX | MIN | MAX |
| A | 15.78 | 15.97 | 0.621 | 0.629 |
| B | 10.01 | 10.21 | 0.394 | 0.402 |
| C | 4.90 | 4.90 | 0.191 | 0.191 |
| D | 0.57 | 0.96 | 0.026 | 0.034 |
| E | 3.08 | 3.27 | 0.121 | 0.129 |
| G | 2.54 BSC | 0.100 BSC | | |
| H | 3.13 | 3.27 | 0.123 | 0.129 |
| J | 0.46 | 0.64 | 0.018 | 0.025 |
| K | 12.70 | 14.27 | 0.500 | 0.562 |
| L | 1.14 | 1.52 | 0.045 | 0.060 |
| N | 5.08 BSC | 0.200 BSC | | |
| Q | 3.21 | 3.40 | 0.126 | 0.134 |
| R | 2.72 | 2.81 | 0.107 | 0.111 |
| S | 2.44 | 2.64 | 0.096 | 0.104 |
| U | 6.58 | 6.78 | 0.259 | 0.267 |

CASE 221D-02
ISOLATED TO-220 TYPE



ELECTRICAL CHARACTERISTICS ($T_C = 25^\circ\text{C}$ unless otherwise noted)

T-33-11

| Characteristic | Symbol | Min | Typ | Max | Unit |
|--|----------------|--------|--------|-------------|------|
| OFF CHARACTERISTICS⁽¹⁾ | | | | | |
| Collector-Emitter Sustaining Voltage (Table 2) ($I_C = 100\text{ mA}$, $I_B = 0$) | $V_{CEO(sus)}$ | 450 | — | — | Vdc |
| Collector Cutoff Current ($V_{CEV} = 850\text{ Vdc}$, $V_{BE(off)} = 1.5\text{ Vdc}$) ($V_{CEV} = 850\text{ Vdc}$, $V_{BE(off)} = 1.5\text{ Vdc}$, $T_C = 100^\circ\text{C}$) | I_{CEV} | — — | — — | 0.25 1.5 | mAdc |
| Collector Cutoff Current ($V_{CE} = 850\text{ Vdc}$, $R_{BE} = 50\ \Omega$, $T_C = 100^\circ\text{C}$) | I_{CER} | — | — | 2.5 | mAdc |
| Emitter Cutoff Current ($V_{EB} = 6.0\text{ Vdc}$, $I_C = 0$) | I_{EBO} | — | — | 1.0 | mAdc |

SECOND BREAKDOWN

| | | | | | |
|---|-----------|---------------|--|--|--|
| Second Breakdown Collector Current with Base Forward Biased | $I_{S/b}$ | See Figure 15 | | | |
| Clamped Inductive SOA with Base Reverse Biased | RBSOA | See Figure 16 | | | |

ON CHARACTERISTICS⁽¹⁾

| | | | | | |
|---|---------------|-------------|-------------|-------------------|-----|
| Collector-Emitter Saturation Voltage ($I_C = 1.5\text{ Adc}$, $I_B = 0.2\text{ Adc}$) ($I_C = 3.0\text{ Adc}$, $I_B = 0.4\text{ Adc}$) ($I_C = 3.0\text{ Adc}$, $I_B = 0.4\text{ Adc}$, $T_C = 100^\circ\text{C}$) | $V_{CE(sat)}$ | — — — | — — — | 1.0 2.5 2.5 | Vdc |
| Base-Emitter Saturation Voltage ($I_C = 3.0\text{ Adc}$, $I_B = 0.4\text{ Adc}$) ($I_C = 3.0\text{ Adc}$, $I_B = 0.4\text{ Adc}$, $T_C = 100^\circ\text{C}$) | $V_{BE(sat)}$ | — — | — — | 1.5 1.5 | Vdc |
| DC Current Gain ($I_C = 5.0\text{ Adc}$, $V_{CE} = 5.0\text{ Vdc}$) | h_{FE} | 5.0 | — | — | — |

DYNAMIC CHARACTERISTICS

| | | | | | |
|--|------------|---|----|-----|----|
| Output Capacitance ($V_{CB} = 10\text{ Vdc}$, $I_E = 0$, $f_{test} = 1.0\text{ kHz}$) | C_{ob} | — | — | 200 | pF |
| Collector to Heatsink Capacitance | C_{c-hs} | — | 15 | — | pF |

SWITCHING CHARACTERISTICS

| Resistive Load (Table 1) | | | | | | | |
|--------------------------|---|--|----------|---|------|------|----|
| Delay Time | $I_C = 3.0\text{ Adc},$ $V_{CC} = 250\text{ Vdc},$ $I_{B1} = 0.4\text{ Adc},$ $PW = 30\text{ }\mu\text{s},$ Duty Cycle $\leq 2.0\%$) | $(I_{B2} = 0.8\text{ Adc},$ $R_{B2} = 8.0\text{ }\Omega)$ | t_d | — | 30 | 100 | ns |
| Rise Time | | | t_r | — | 100 | 300 | |
| Storage Time | | | t_s | — | 1000 | 3000 | |
| Fall Time | | | t_f | — | 60 | 300 | |
| Storage Time | | $(V_{BE(off)} = 5.0\text{ Vdc})$ | t_s | — | 400 | — | |
| Fall Time | | | t_f | — | 130 | — | |
| | | | | | | | |
| Inductive Load (Table 2) | | | | | | | |
| Storage Time | $(I_C = 3.0\text{ Adc},$ $I_{B1} = 0.4\text{ Adc},$ $V_{BE(off)} = 5.0\text{ Vdc},$ $V_{CE(pk)} = 400\text{ Vdc})$ | $(T_J = 100^\circ\text{C})$ | t_{sv} | — | 500 | 1600 | ns |
| Fall Time | | | t_{fi} | — | 100 | 200 | |
| Crossover Time | | | t_c | — | 120 | 250 | |
| Storage Time | | $(T_J = 150^\circ\text{C})$ | t_{sv} | — | 600 | — | |
| Fall Time | | | t_{fi} | — | 120 | — | |
| Crossover Time | | | t_c | — | 160 | — | |

(1) Pulse Test: $PW = 300\ \mu\text{s}$, Duty Cycle $\leq 2.0\%$.

TYPICAL STATIC CHARACTERISTICS

T-33-11

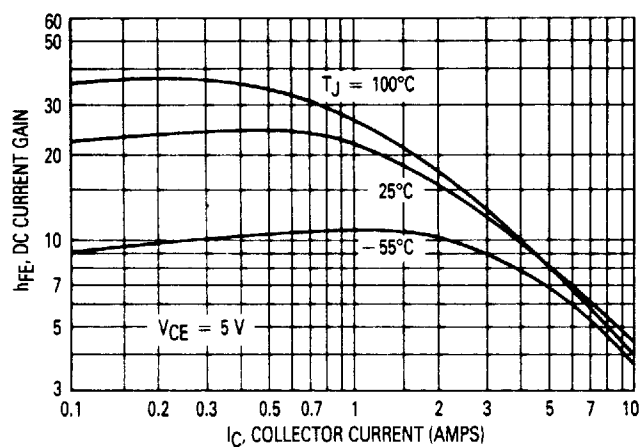


Figure 1. DC Current Gain

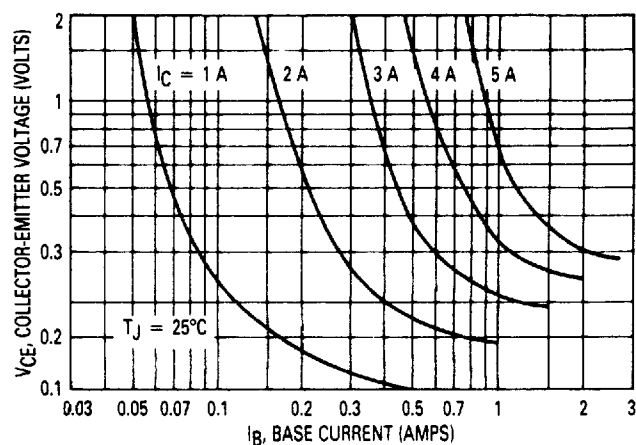


Figure 2. Collector Saturation Region

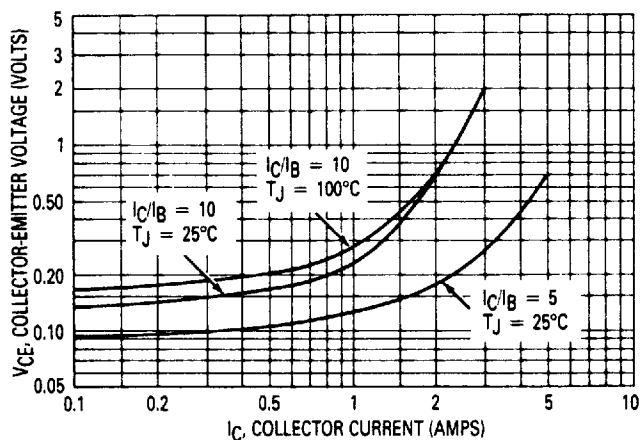


Figure 3. Collector-Emitter Saturation Voltage

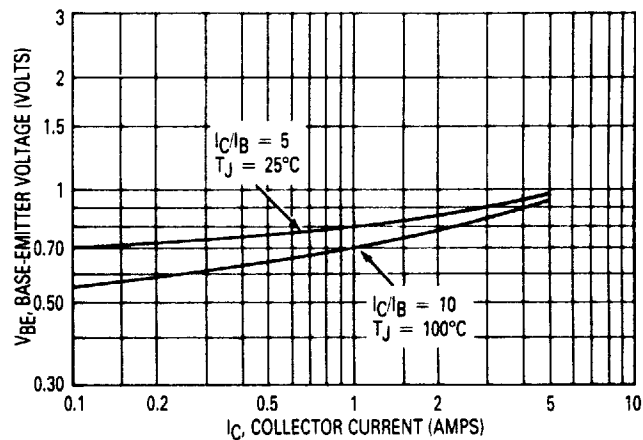


Figure 4. Base-Emitter Voltage

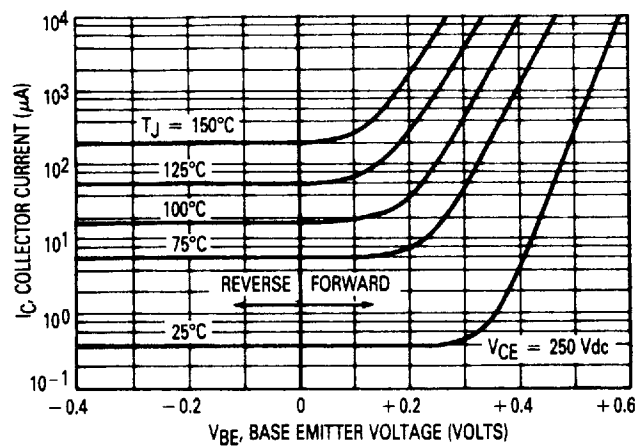


Figure 5. Collector Cutoff Region

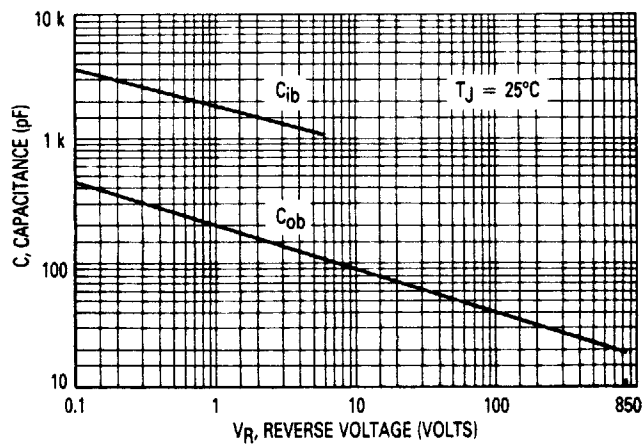


Figure 6. Capacitance

TYPICAL DYNAMIC CHARACTERISTICS

T-33-11

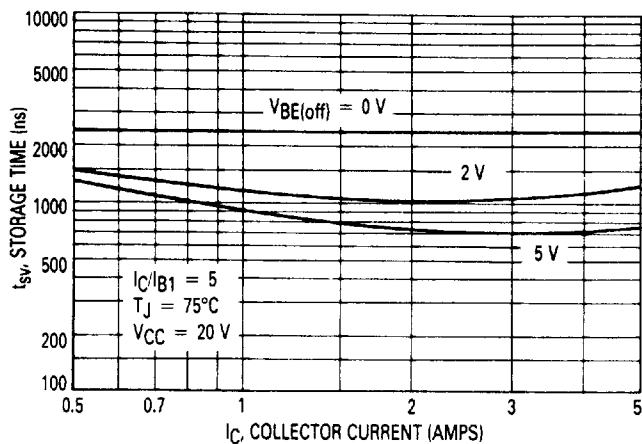


Figure 7. Storage Time

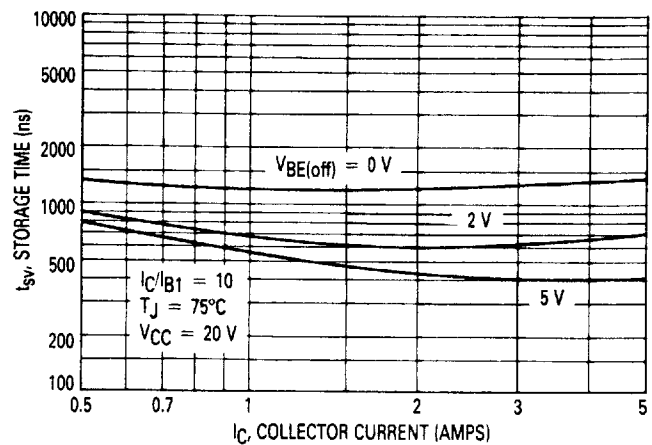


Figure 8. Storage Time

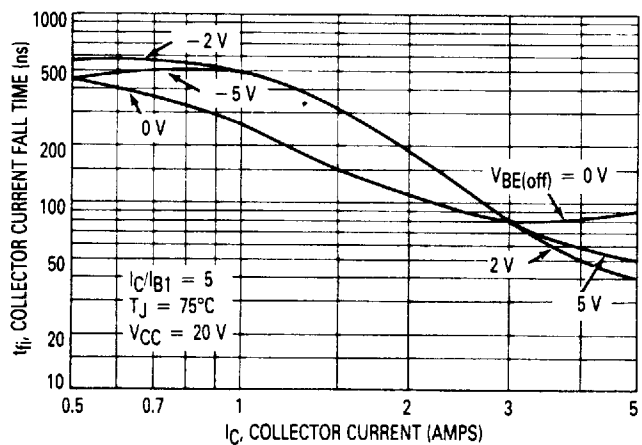


Figure 9. Collector Current Fall Time

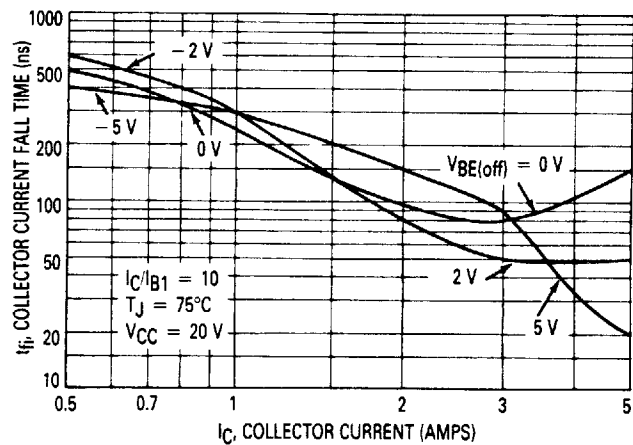


Figure 10. Collector Current Fall Time

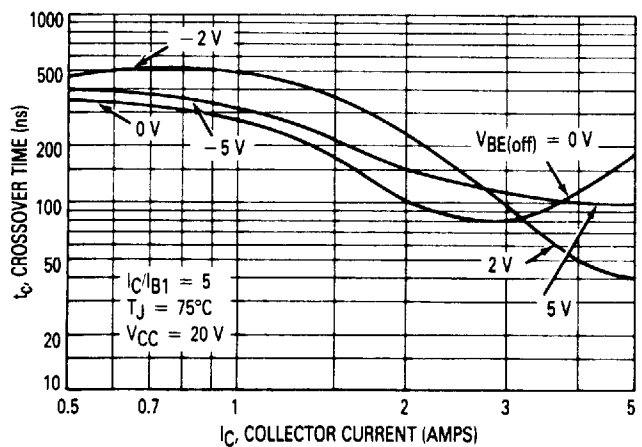


Figure 11. Crossover Time

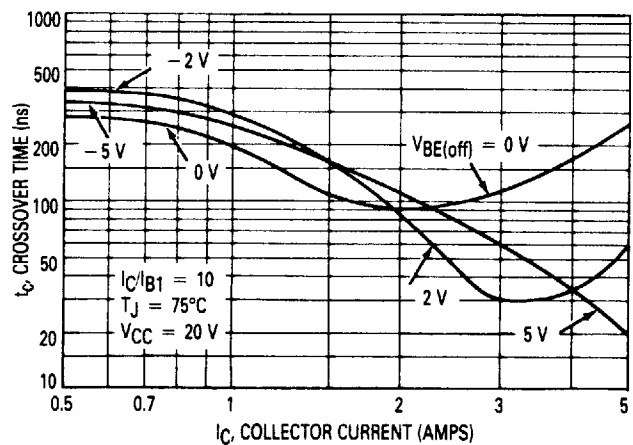


Figure 12. Crossover Time

TYPICAL ELECTRICAL CHARACTERISTICS

T-33-11

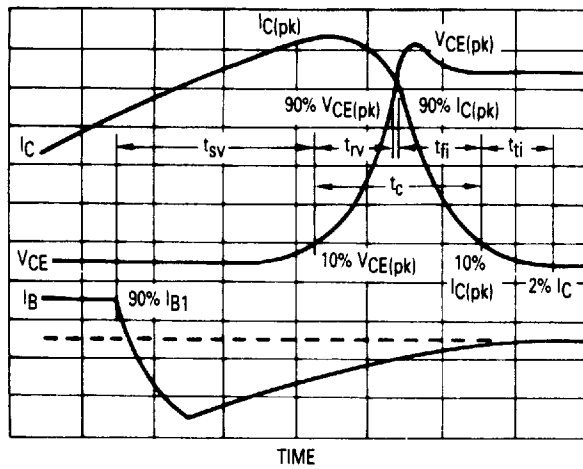


Figure 13. Inductive Switching Measurements

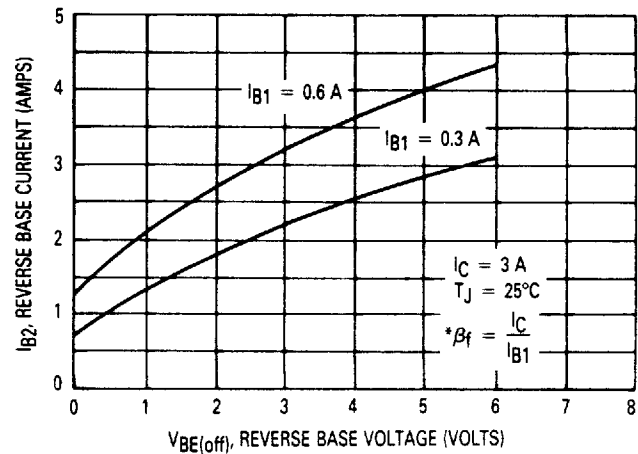


Figure 14. Peak Reverse Base Current

Table 1. Resistive Load Switching

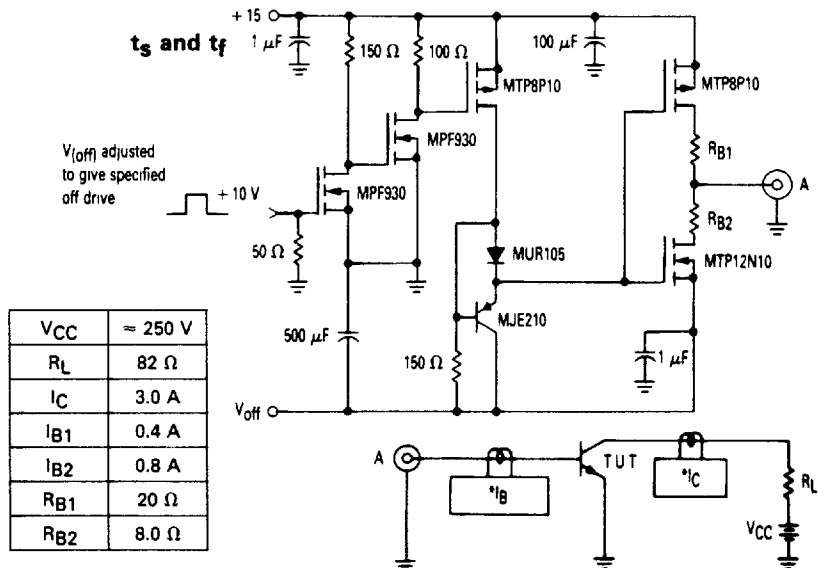
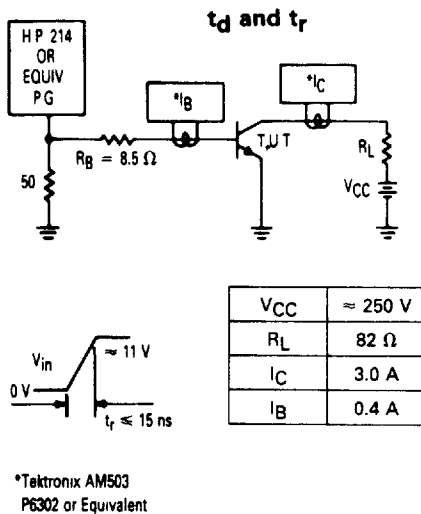
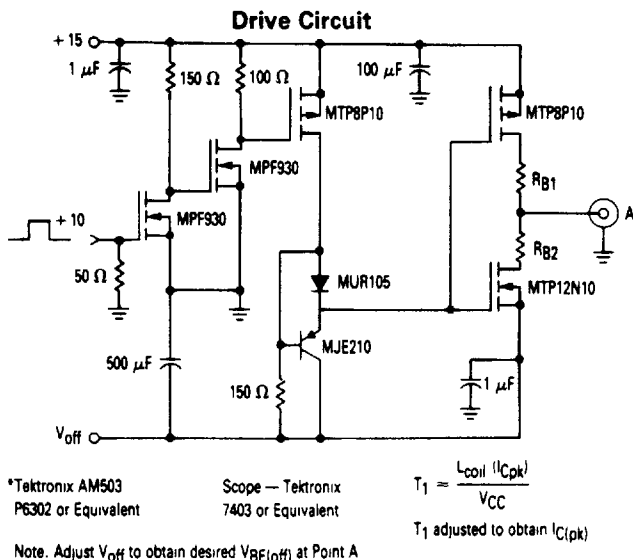


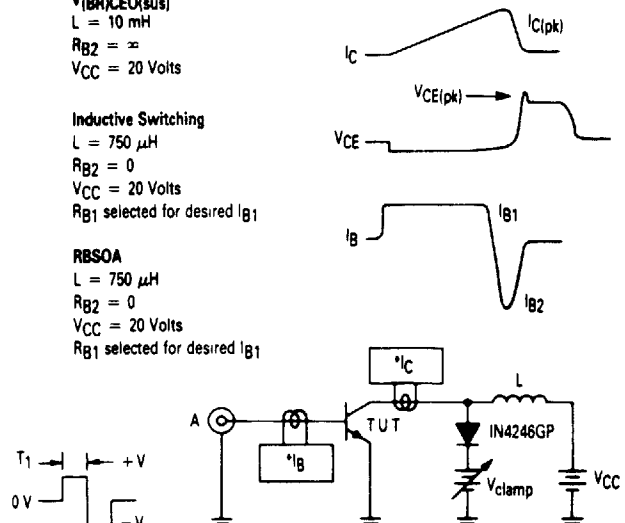
Table 2. Inductive Load Switching



V_{BE(off)}(sus)
L = 10 mH
R_{B2} = ∞
V_{CC} = 20 Volts

Inductive Switching
L = 750 μH
R_{B2} = 0
V_{CC} = 20 Volts
R_{B1} selected for desired I_{B1}

RBSOA
L = 750 μH
R_{B2} = 0
V_{CC} = 20 Volts
R_{B1} selected for desired I_{B1}



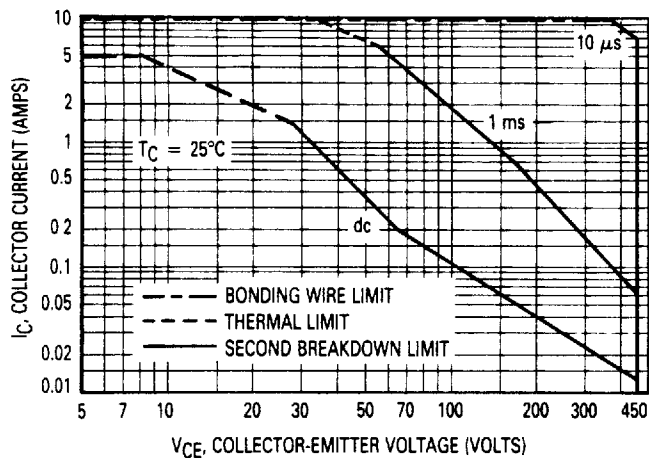


Figure 15. Maximum Rated Forward Bias Safe Operating Area

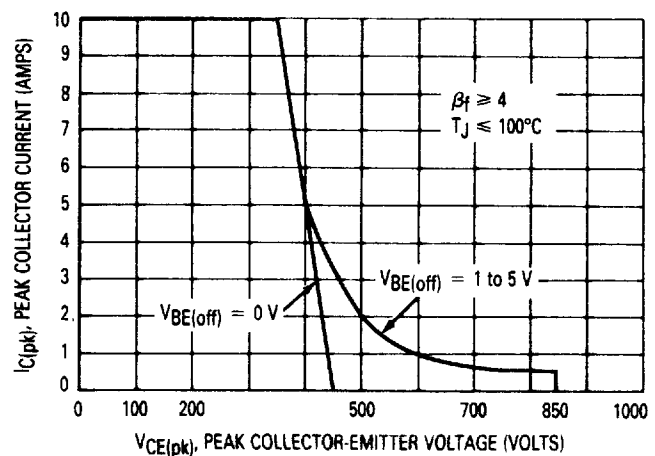


Figure 16. Maximum Rated Reverse Bias Safe Operating Area

T-33-11

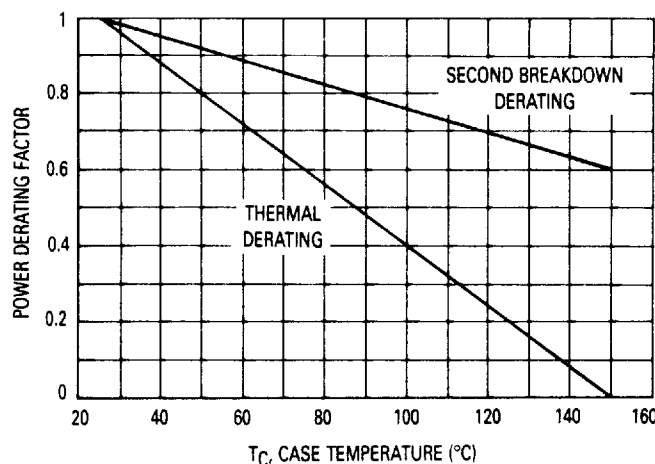


Figure 17. Power Derating

SAFE OPERATING AREA INFORMATION

FORWARD BIAS

There are two limitations on the power handling ability of a transistor: average junction temperature and second breakdown. Safe operating area curves indicate I_C - V_{CE} limits of the transistor that must be observed for reliable operation; i.e., the transistor must not be subjected to greater dissipation than the curves indicate.

The data of Figure 15 is based on $T_C = 25^\circ\text{C}$; $T_{J(pk)}$ is variable depending on power level. Second breakdown pulse limits are valid for duty cycles to 10% but must be derated when $T_C \geq 25^\circ\text{C}$. Second breakdown limitations do not derate the same as thermal limitations. Allowable current at the voltages shown on Figure 15 may be found at any case temperature by using the appropriate curve on Figure 17.

At high case temperatures, thermal limitations will reduce the power that can be handled to values less than the limitations imposed by second breakdown.

REVERSE BIAS

For inductive loads, high voltage and high current must be sustained simultaneously during turn-off, in most cases, with the base-to-emitter junction reverse biased. Under these conditions the collector voltage must be held to a safe level at or below a specific value of collector current. This can be accomplished by several means such as active clamping, RC snubbing, load line shaping, etc. The safe level for these devices is specified as Reverse Biased Safe Operating Area and represents the voltage-current condition allowable during reverse biased turn-off. This rating is verified under clamped conditions so that the device is never subjected to an avalanche mode. Figure 16 gives the RBSOA characteristics.

1. FBSOA —

Allowable dc power dissipation in bipolar power transistors decreases dramatically with increasing collector-emitter voltage. A transistor which safely dissipates 100 watts at 10 volts will typically dissipate less than 10 watts at its rated $V_{(BR)CEO(sus)}$. From a power handling point of view, current and voltage are not interchangeable (see Application Note AN875).

2. TURN-ON —

Safe turn-on load line excursions are bounded by pulsed FBSOA curves. The 10 μ s curve applies for resistive loads, most capacitive loads, and inductive loads that are clamped by standard or fast recovery rectifiers. Similarly, the 100 ns curve applies to inductive loads which are clamped by ultra-fast recovery rectifiers, and are valid for turn-on crossover times less than 100 ns (see Application Note AN952).

At voltages above 75% of $V_{(BR)CEO(sus)}$, it is essential to provide the transistor with an adequate amount of base drive VERY RAPIDLY at turn-on. More specifically, safe operation according to the curves is dependent upon base current rise time being less than collector current rise time. As a general rule, a base drive compliance voltage in excess of 10 volts is required to meet this condition (see Application Note AN875).

3. TURN-OFF —

A bipolar transistor's ability to withstand turn-off stress is dependent upon its forward base drive. Gross overdrive violates the RBSOA curve and risks transistor failure. For this reason, circuits which use fixed base drive are often more likely to fail at light loads due to heavy overdrive (see Application Note AN875).

4. OPERATION ABOVE $V_{(BR)CEO(sus)}$ —

When bipolars are operated above collector-emitter breakdown, base drive is crucial. A rapid application of adequate forward base current is needed for safe turn-on, as is a stiff negative bias needed for safe turn-off. Any hiccup in the base-drive circuitry that even momentarily violates either of these conditions will likely cause the transistor to fail. Therefore, it is important to design the driver so that its output is negative in the absence of anything but a clean crisp input signal (see Application Note AN952).

5. RBSOA —

Reverse Biased Safe Operating Area has a first order dependency on circuit configuration and drive parameters. The RBSOA curves in this data sheet are valid only for the conditions specified. For a comparison of RBSOA results in several types of circuits (see Application Note AN951).

6. DESIGN SAMPLES —

Transistor parameters tend to vary much more from wafer lot to wafer lot, over long periods of time, than from one device to the next in the same wafer lot. For design evaluation it is advisable to use transistors from several different date codes.

7. BAKER CLAMPS —

Many unanticipated pitfalls can be avoided by using Baker Clamps. MUR105 and MUR1100 diodes are recommended for base drives less than 1.0 amp. Similarly, MUR405 and MUR4100 types are well-suited for higher drive requirements (see Article Reprint AR131).

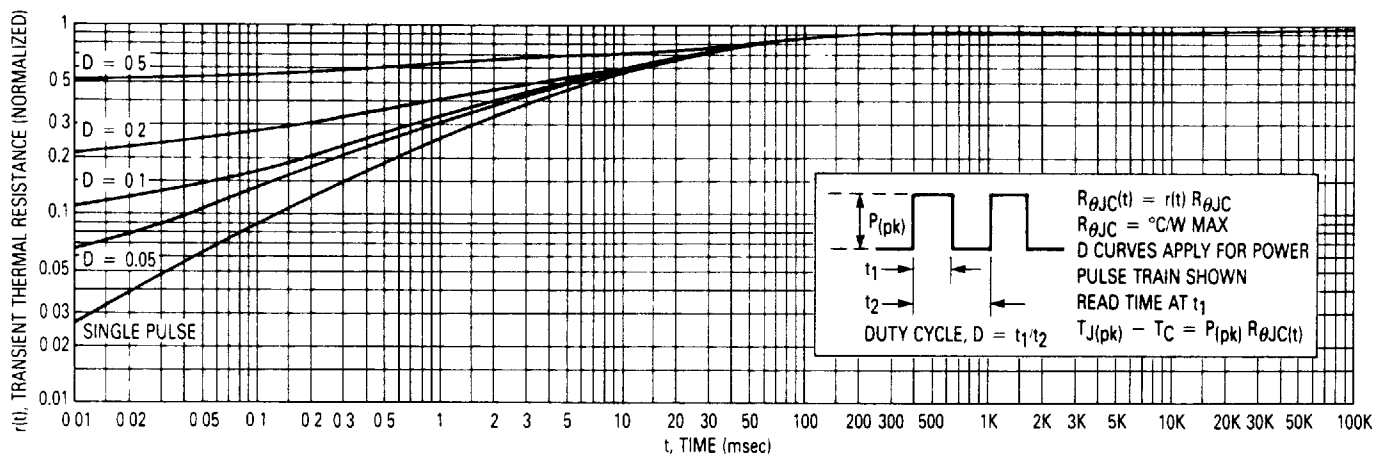


Figure 18. Typical Thermal Response for MJF16002

TEST CONDITIONS FOR ISOLATION TESTS*

T-33-11

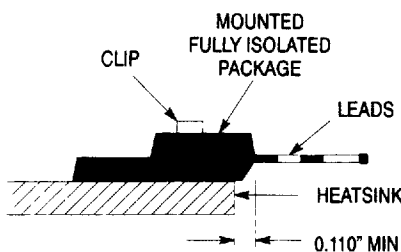


Figure 19. Clip Mounting Position for Isolation Test Number 1

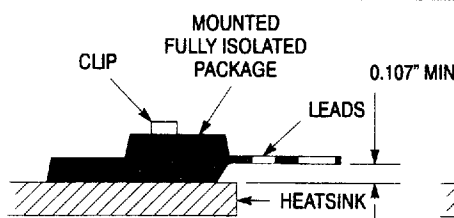


Figure 20. Clip Mounting Position for Isolation Test Number 2

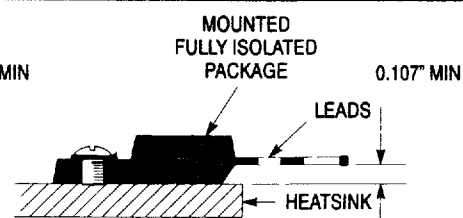


Figure 21. Screw Mounting Position for Isolation Test Number 3

* Measurement made between leads and heatsink with all leads shorted together

MOUNTING INFORMATION

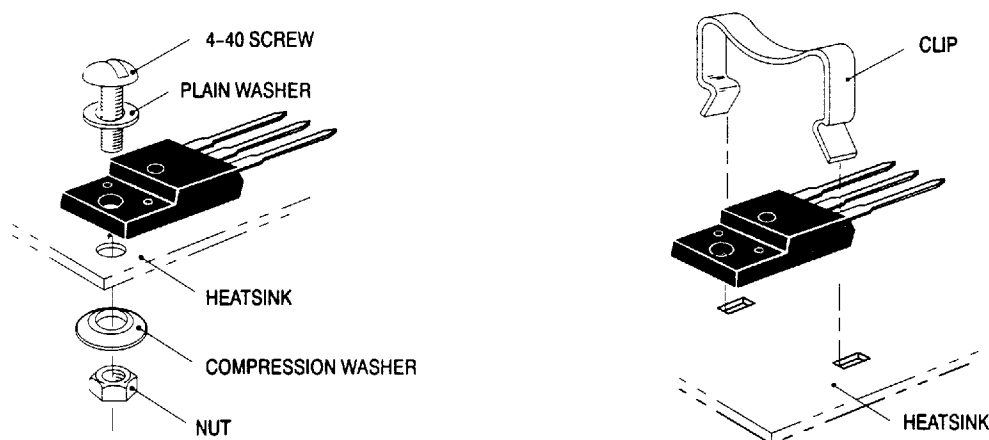


Figure 22. Typical Mounting Techniques*

Laboratory tests on a limited number of samples indicate, when using the screw and compression washer mounting technique, a screw torque of 6 to 8 in · lbs is sufficient to provide maximum power dissipation capability. The compression washer helps to maintain a constant pressure on the package over time and during large temperature excursions.

Destructive laboratory tests show that using a hex head 4-40 screw, without washers, and applying a torque in excess of 20 in · lbs will cause the plastic to crack around the mounting hole, resulting in a loss of isolation capability.

Additional tests on slotted 4-40 screws indicate that the screw slot fails between 15 to 20 in · lbs without adversely affecting the package. However, in order to positively ensure the package integrity of the fully isolated device, Motorola does not recommend exceeding 10 in · lbs of mounting torque under any mounting conditions.

**For more information about mounting power semiconductors see Application Note AN1040.

Motorola reserves the right to make changes without further notice to any products herein. Motorola makes no warranty, representation or guarantee regarding the suitability of its products for any particular purpose, nor does Motorola assume any liability arising out of the application or use of any product or circuit, and specifically disclaims any and all liability, including without limitation consequential or incidental damages. "Typical" parameters can and do vary in different applications. All operating parameters, including "Typicals" must be validated for each customer application by customer's technical experts. Motorola does not convey any license under its patent rights nor the rights of others. Motorola products are not designed, intended, or authorized for use as components in systems intended for surgical implant into the body, or other applications intended to support or sustain life, or for any other application in which the failure of the Motorola product could create a situation where personal injury or death may occur. Should Buyer purchase or use Motorola products for any such unintended or unauthorized application, Buyer shall indemnify and hold Motorola and its officers, employees, subsidiaries, affiliates, and distributors harmless against all claims, costs, damages, and expenses, and reasonable attorney fees arising out of, directly or indirectly, any claim of personal injury or death associated with such unintended or unauthorized use, even if such claim alleges that Motorola was negligent regarding the design or manufacture of the part. Motorola and (M) are registered trademarks of Motorola, Inc. Motorola, Inc. is an Equal Opportunity/Affirmative Action Employer.

Literature Distribution Centers:

USA: Motorola Literature Distribution; P.O. Box 20912; Phoenix, Arizona 85036.

EUROPE: Motorola Ltd.; European Literature Centre; 88 Tanners Drive, Blakelands, Milton Keynes, MK14 5BP, England.

JAPAN: Nippon Motorola Ltd.; 4-32-1, Nishi-Gotanda, Shinagawa-ku, Tokyo 141 Japan.

ASIA-PACIFIC: Motorola Semiconductors H.K. Ltd.; Silicon Harbour Center, No. 2 Dai King Street, Tai Po Industrial Estate, Tai Po, N.T., Hong Kong.



MOTOROLA