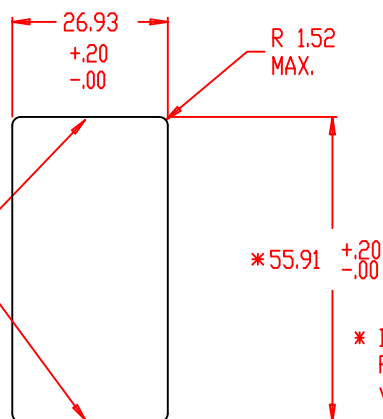
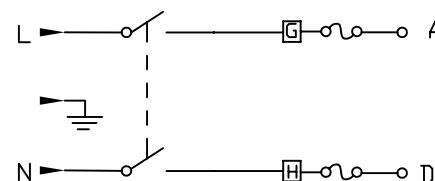


Back View  
Unfiltered



Stamp hole  
from installation  
side to insure  
proper engagement  
of snap mechanisms.



\* Dimension for panel thickness of .08 to 2.0mm.  
For panel thickness of 2.1 to 2.9mm, use  
value of 56.21mm.

THIS DOCUMENT AND ITS CONTENTS ARE THE PROPRIETARY CONFIDENTIAL  
PROPERTY OF INTERPOWER CORPORATION. NO USE OR COPIES  
MAY BE MADE WITHOUT WRITTEN PERMISSION FROM INTERPOWER CORPORATION.

#### DIMENSIONS IN MILLIMETERS

TITLE Module

DRAFT BY: JPC

DATE: 5-5-2003

DRAFTING  
APPROVAL:

DATE:

PART  
NUMBER:

83543010

A Added back view to drawing.

6/21/07 DDF

MATERIAL:

DO NOT SCALE

INTERPOWER  
CORPORATION

REV CHANGE DESCRIPTION

DATE INITIALS

SHEET 1 OF 1