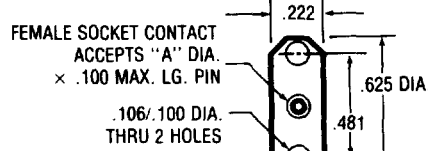
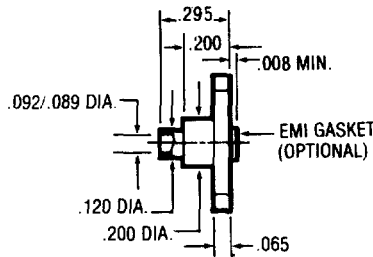


NON-CONNECTOR TYPE

.085 SEMI-RIGID CABLE • DIRECT ATTACHMENT

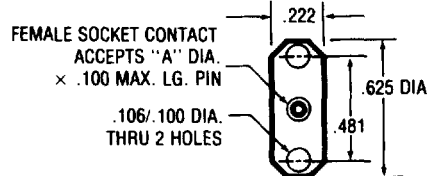
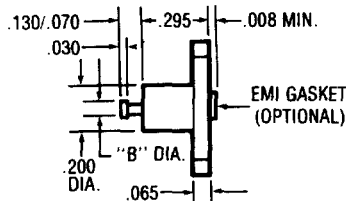


EMI GASKET	DIA. "A"	MAX. FREQ. GHz	MAX. VSWR	PART NUMBER
WITH	.016/.011	36.0	1.05+.006 X FGHz	6952-8527-2715
WITH	.021/.017	36.0	1.05+.006 X FGHz	6952-8527-2720
WITHOUT	.016/.011	36.0	1.05+.006 X FGHz	6952-8520-2715
WITHOUT	.021/.017	36.0	1.05+.006 X FGHz	6952-8520-2720

MATERIALS AND FINISHES

Flange Body: Brass;
nickel-plated
Contact: Beryllium copper, heat treated; gold-plated
Insulator: Teflon
EMI Gasket: Silver-plated aluminum in silicon

FIELD REPLACEABLE (2 PIECE)



EMI GASKET	DIA. "A"	FILTER CAP. MIN.	FEEDTHROUGH CURRENT MAX.	B DIA.	PART NUMBER
WITH	.016/.011	2,000 pFd	-	.065	6652-0789-2715
WITH	.016/.011	-	15 AMPS	.050	6452-0789-2715
WITH	.021/.017	2,000 pFd	-	.065	6652-0789-2720
WITH	.021/.017	-	15 AMPS	.050	6452-0789-2720
WITHOUT	.016/.011	2,000 pFd	-	.065	6652-0089-2715
WITHOUT	.016/.011	-	15 AMPS	.050	6452-0089-2715
WITHOUT	.021/.017	2,000 pFd	-	.065	6652-0089-2720
WITHOUT	.021/.017	-	15 AMPS	.050	6452-0089-2720

MATERIALS AND FINISHES

Flange body: Brass;
nickel-plated
Contact: Beryllium copper, heat treated; gold-plated
Insulator: Teflon
EMI Gasket: Silver-plated aluminum in silicon